

STANDARD INVITATION CARD TEMPLATE

Size: 148x105mm

Colour: CMYK Printing



BLEED AREA (302x111mm)

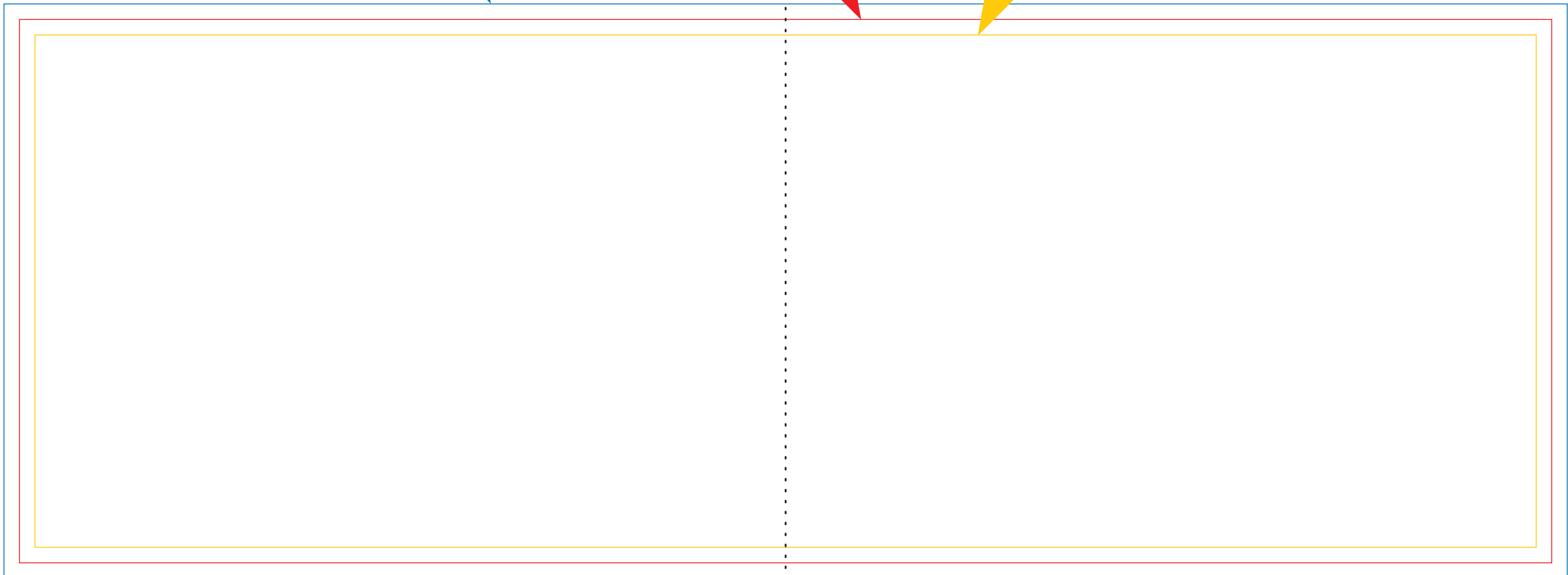
Enlarge background image around four corners to avoid undesirable white borders.

CROP AREA (296x105mm)

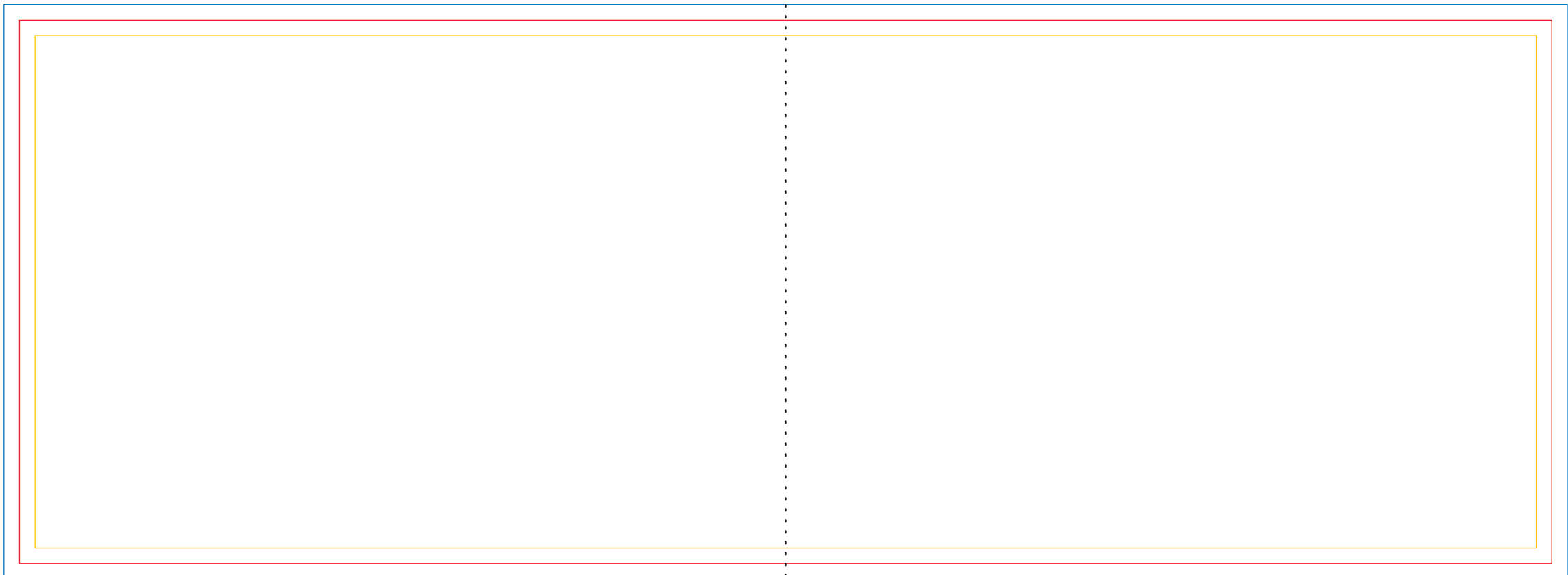
This will be the cropped size of the print product.

SAFETY MEASURE (290x99mm)

All important elements (text, images, logo etc.) have to be placed within this area.



Inside of

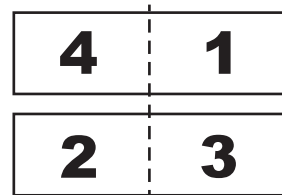


Outside of

Folding Line

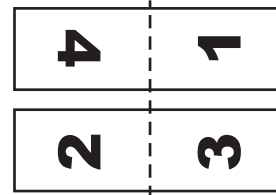
Layout methods (There are 2 options for layout methods. Please state which method you have used to avoid misunderstanding)

Pattern A



The fourth image at top left corner (Vertical placement required)
The second image at bottom left corner (Vertical placement required)
The first image at top right corner (Vertical placement required)
The third image at bottom right corner (Vertical placement required)

Pattern B



The fourth image at top left corner (Must turn to the left 90°)
The second image at bottom left corner (Shall be to the right turn 90°)
The first image at top right corner (Shall be to the right turn 90°)
The third image at bottom right corner (Shall be to the right turn 90°)

If you are using version of CS or above please save your artwork as
Illustrator 10 version File>Save as
(Illustrator legacy format)
TO AVOID ANY DELAYS

Please also
attach preview of artwork in JPG (300K and 150K)
TO AVOID ANY DELAYS

What you need to know when submitting artwork

(Please go to www.forestprint.com.au for more detail)

All embedded images must not be less than 300dpi.
All logo and images have to be embedded into the artwork.
Please make sure all text is correct as we will not alter your artwork and its content.
Please make sure that your artwork has at least 1mm bleed around all corners.
All important elements (text, images, logo etc.) have to be placed within the yellow line.



**All Australian
Delivery Service**

- We use standard CMYK for printing. Using other colour models in your artwork such as RGB and Pantone might cause differentiation or error in the colours on your print product.
- Final print product might only be 85% close to what you see your artwork as on screen in terms of colour. An interval of 15% of colour differentiation is an acceptable standard for the printing industry.